



# FLOWD<sup>®</sup> 8020

X-RAY PROTECTIVE CLOTHING TESTING  
COMPLIANT WITH DIN 6857-2 AND ÖNORM S 5213



FDA accession number:  
2311895-000

- HEALTHCARE FACILITIES ●
- RADIOGRAPHY ROOMS ●
- PPE MANUFACTURERS ●
- TEST LABORATORIES ●



## KEY FEATURES

- Auto-detection of weak areas
- Determination of lead equivalence
- Full size image
- Safety from X-ray radiation
- Plug & Play
- Enhanced mobility

## Testing of X-ray personal protective equipment has become easy!

Flaws detector FlowD<sup>®</sup> 8020 is created both for non-destructive radiographic tests of X-ray personal protective equipment to approve its further use and for quality control of X-ray protective materials in X-ray PPE manufacturing companies.

The device is capable of testing various types of X-ray PPE: aprons, skirts, vests, thyroid collars, etc. Moreover, the core protective material can be of any type: pure lead, leaded rubber, lead free rubber etc.

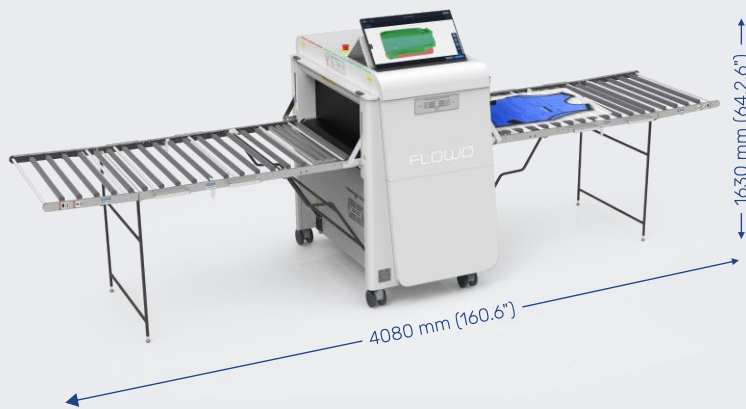
The device doesn't require special protective rooms as its dose rate doesn't exceed 1  $\mu$ Sv/h at any point at a distance of 0.1 from the device's outer surface.



# FLOWD<sup>®</sup> 8020

## GENERAL SPECIFICATIONS

ANODE VOLTAGE	80 / 100 kV
INSPECTION WINDOW	
Height	240 ± 5 mm (9.45 ± 0.2")
Width	870 ± 3 mm (34.25 ± 0.1")
DIMENSIONS OF INSPECTED OBJECT	
width	750 mm (29.53")
height	200 mm (7.9")
length	1300 mm (51.2")
MAXIMUM CONVEYOR LOAD	25 kg (55 lbs)
WEIGHT	400 kg (882 lbs)

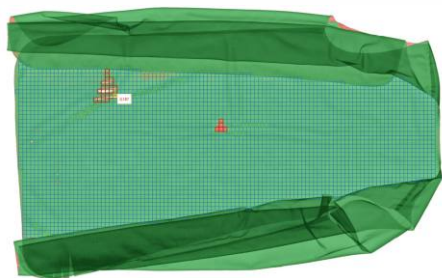


### CONFORMITY CERTIFICATES:

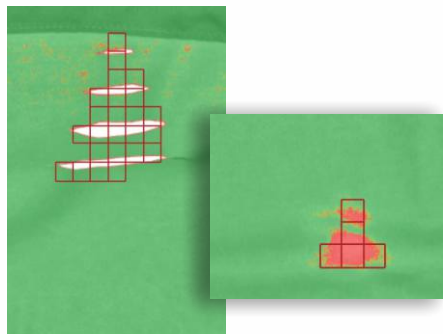
- CE No 24TSU0180
- ISO 9001:2015

## CAPABILITIES

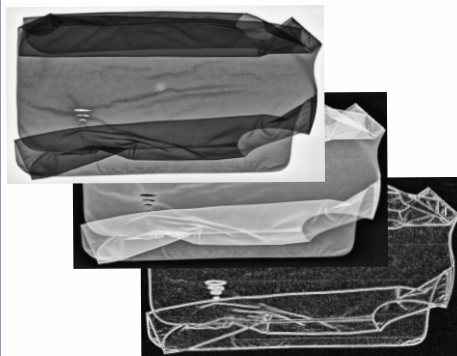
Determination of the actual lead equivalent and "traffic-light" colourisation



Auto-detection of potentially weak areas and anomalies



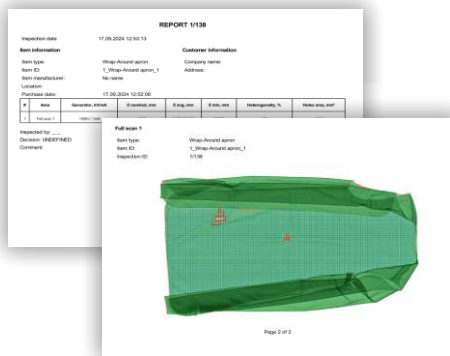
Brilliant Image-processing tools to inspect maximum in depth



Group mode to inspect several items on just one scan



Reporting function to liberate staff from paperwork



Barcode scanning, tracking and database search

